

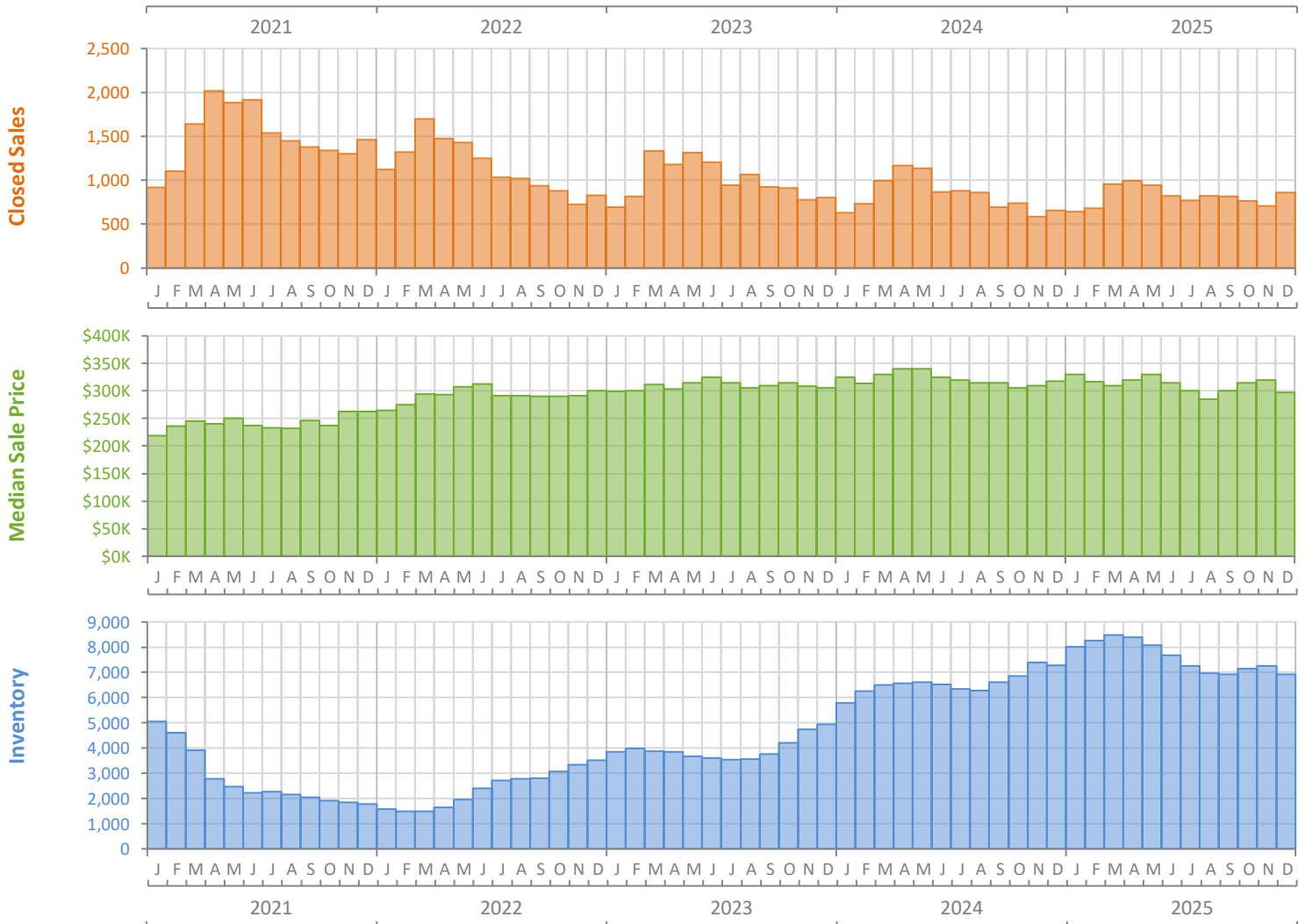
# Monthly Market Summary - December 2025

## Townhouses and Condos

### Palm Beach County



	December 2025	December 2024	Percent Change Year-over-Year
Closed Sales	858	654	31.2%
Paid in Cash	538	387	39.0%
Median Sale Price	\$297,000	\$317,500	-6.5%
Average Sale Price	\$491,006	\$472,486	3.9%
Dollar Volume	\$421.3 Million	\$309.0 Million	36.3%
Med. Pct. of Orig. List Price Received	91.4%	92.5%	-1.2%
Median Time to Contract	63 Days	55 Days	14.5%
Median Time to Sale	99 Days	91 Days	8.8%
New Pending Sales	734	635	15.6%
New Listings	1,175	1,337	-12.1%
Pending Inventory	1,137	989	15.0%
Inventory (Active Listings)	6,925	7,287	-5.0%
Months Supply of Inventory	8.5	8.8	-3.4%



# Monthly Distressed Market - December 2025

## Townhouses and Condos

### Palm Beach County



		December 2025	December 2024	Percent Change Year-over-Year
Traditional	Closed Sales	853	644	32.5%
	Median Sale Price	\$299,900	\$320,000	-6.3%
Foreclosure/REO	Closed Sales	5	8	-37.5%
	Median Sale Price	\$137,000	\$182,500	-24.9%
Short Sale	Closed Sales	0	2	-100.0%
	Median Sale Price	(No Sales)	\$117,500	N/A

