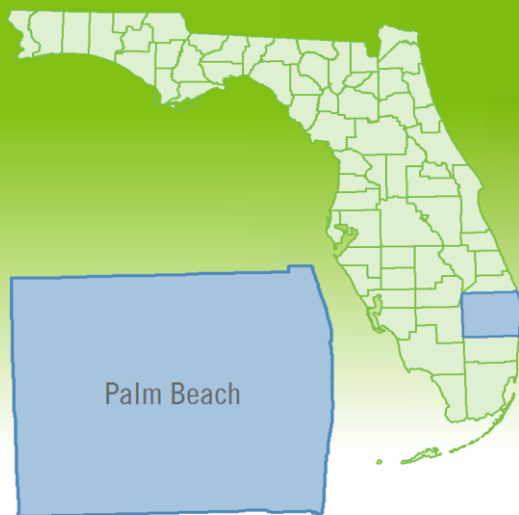


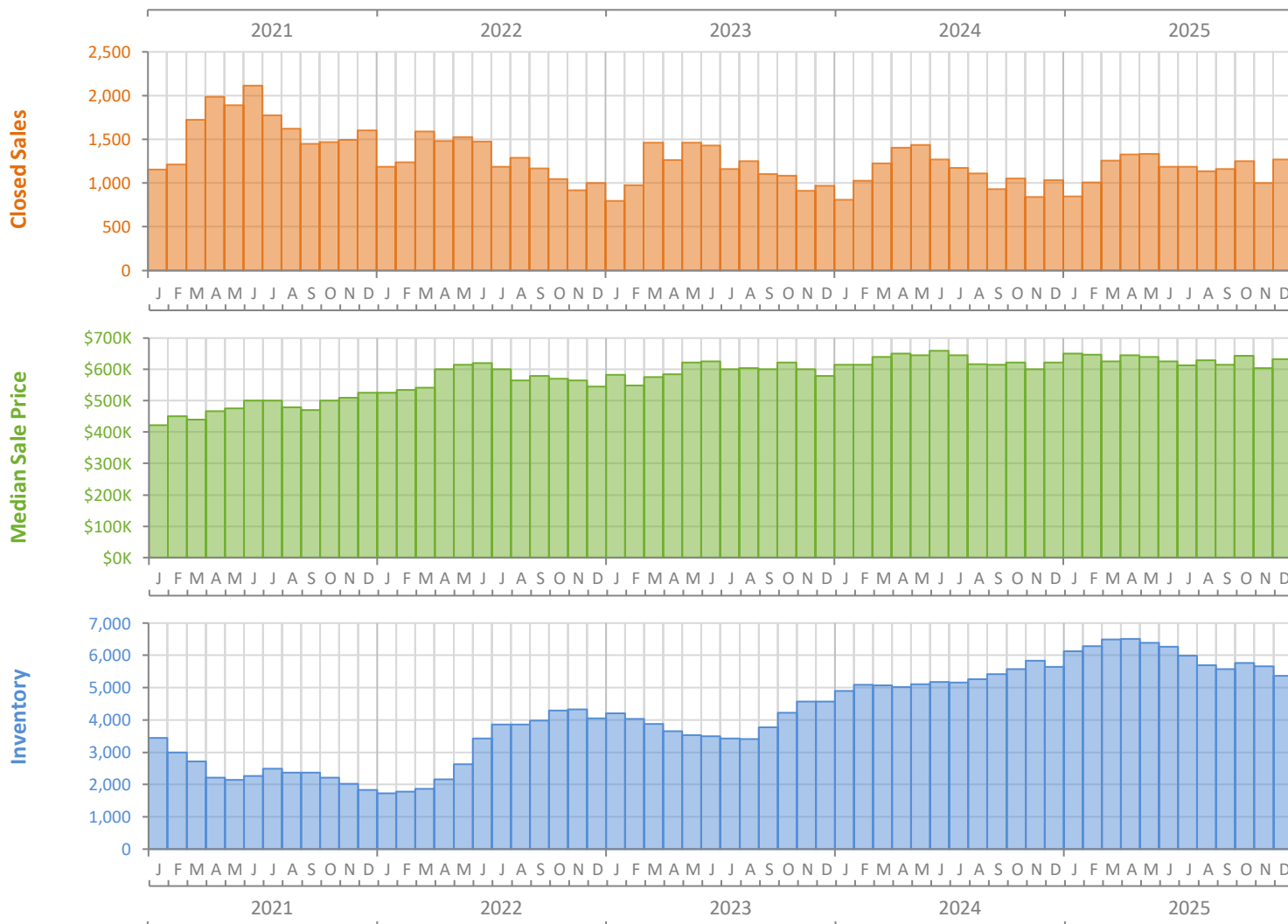
# Monthly Market Summary - December 2025

## Single-Family Homes

### Palm Beach County



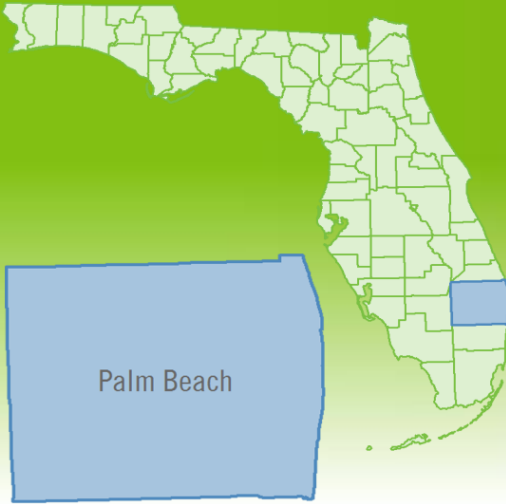
	December 2025	December 2024	Percent Change Year-over-Year
Closed Sales	1,269	1,032	23.0%
Paid in Cash	525	448	17.2%
Median Sale Price	\$632,500	\$622,500	1.6%
Average Sale Price	\$1,353,599	\$1,066,261	26.9%
Dollar Volume	\$1.7 Billion	\$1.1 Billion	56.1%
Med. Pct. of Orig. List Price Received	94.3%	94.2%	0.1%
Median Time to Contract	45 Days	41 Days	9.8%
Median Time to Sale	83 Days	83 Days	0.0%
New Pending Sales	1,007	888	13.4%
New Listings	1,283	1,295	-0.9%
Pending Inventory	1,419	1,260	12.6%
Inventory (Active Listings)	5,370	5,637	-4.7%
Months Supply of Inventory	4.6	5.1	-9.8%



# Monthly Distressed Market - December 2025

## Single-Family Homes

### Palm Beach County



		December 2025	December 2024	Percent Change Year-over-Year
Traditional	Closed Sales	1,255	1,027	22.2%
	Median Sale Price	\$635,000	\$625,000	1.6%
Foreclosure/REO	Closed Sales	9	5	80.0%
	Median Sale Price	\$470,000	\$450,000	4.4%
Short Sale	Closed Sales	5	0	N/A
	Median Sale Price	\$410,000	(No Sales)	N/A

