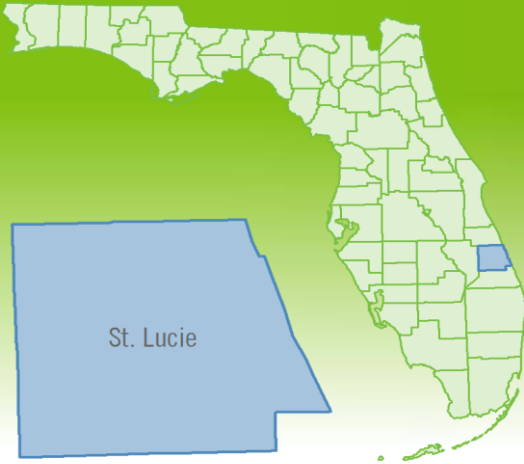


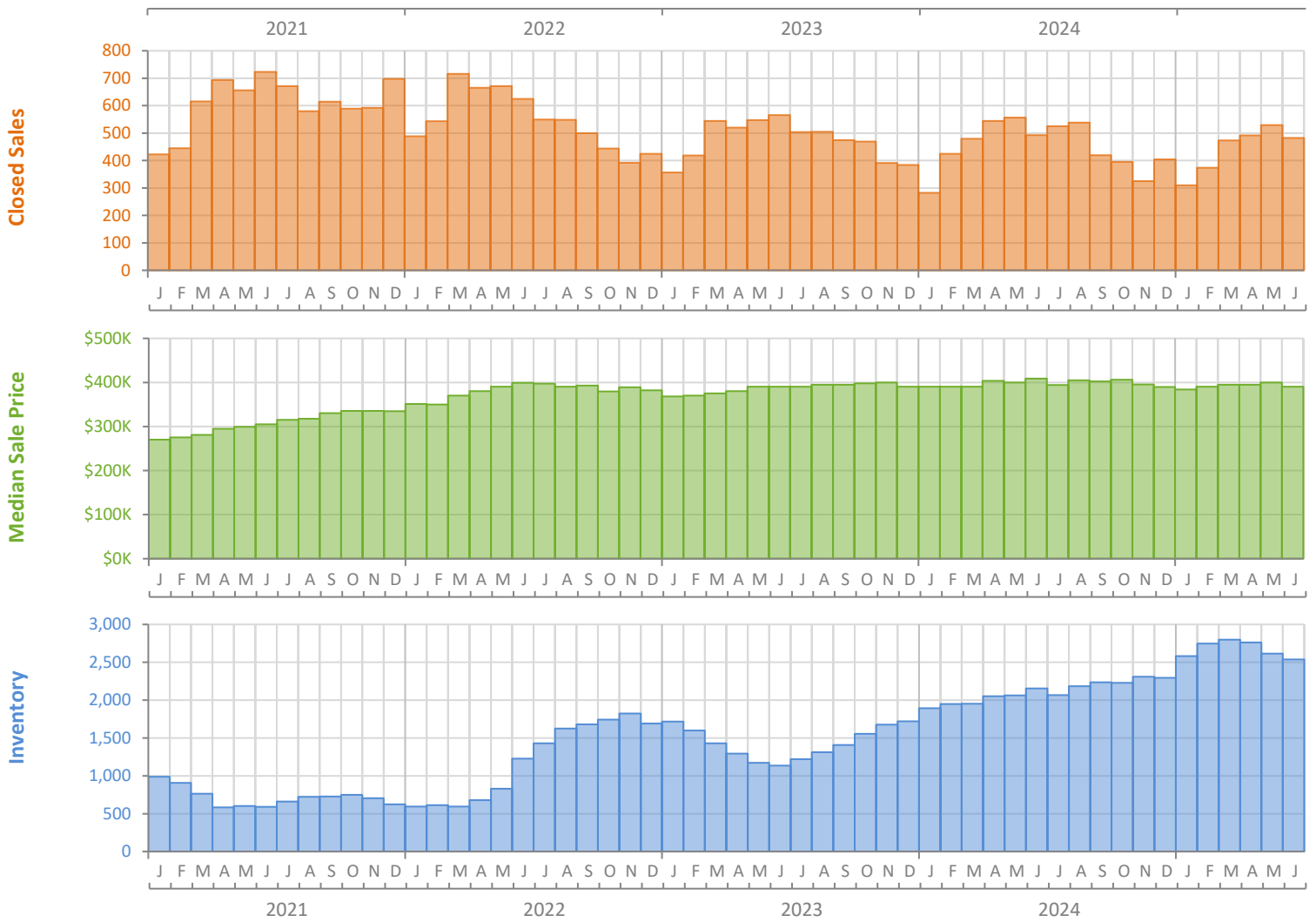
# Monthly Market Summary - June 2025

## Single-Family Homes

### St. Lucie County



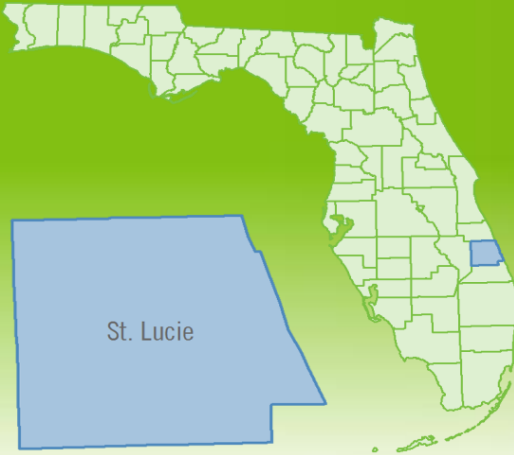
	June 2025	June 2024	Percent Change Year-over-Year
Closed Sales	483	493	-2.0%
Paid in Cash	102	114	-10.5%
Median Sale Price	\$390,000	\$408,380	-4.5%
Average Sale Price	\$421,654	\$432,085	-2.4%
Dollar Volume	\$203.7 Million	\$213.0 Million	-4.4%
Med. Pct. of Orig. List Price Received	94.9%	95.9%	-1.0%
Median Time to Contract	52 Days	42 Days	23.8%
Median Time to Sale	94 Days	87 Days	8.0%
New Pending Sales	505	517	-2.3%
New Listings	629	670	-6.1%
Pending Inventory	776	806	-3.7%
Inventory (Active Listings)	2,536	2,153	17.8%
Months Supply of Inventory	5.8	4.7	23.4%



# Monthly Distressed Market - June 2025

## Single-Family Homes

### St. Lucie County



		June 2025	June 2024	Percent Change Year-over-Year
Traditional	Closed Sales	480	490	-2.0%
	Median Sale Price	\$390,000	\$408,760	-4.6%
Foreclosure/REO	Closed Sales	1	2	-50.0%
	Median Sale Price	\$355,000	\$397,500	-10.7%
Short Sale	Closed Sales	2	1	100.0%
	Median Sale Price	\$225,500	\$350,000	-35.6%

