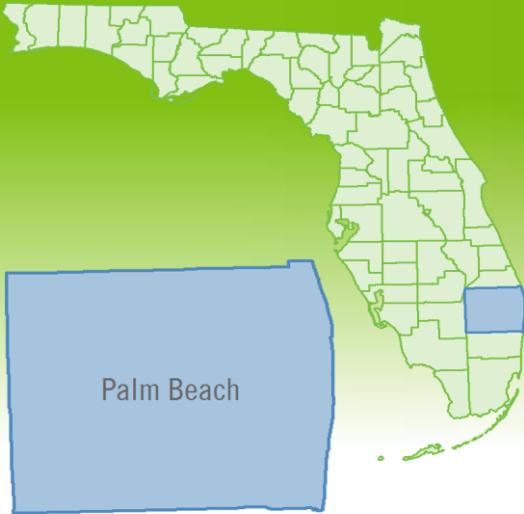


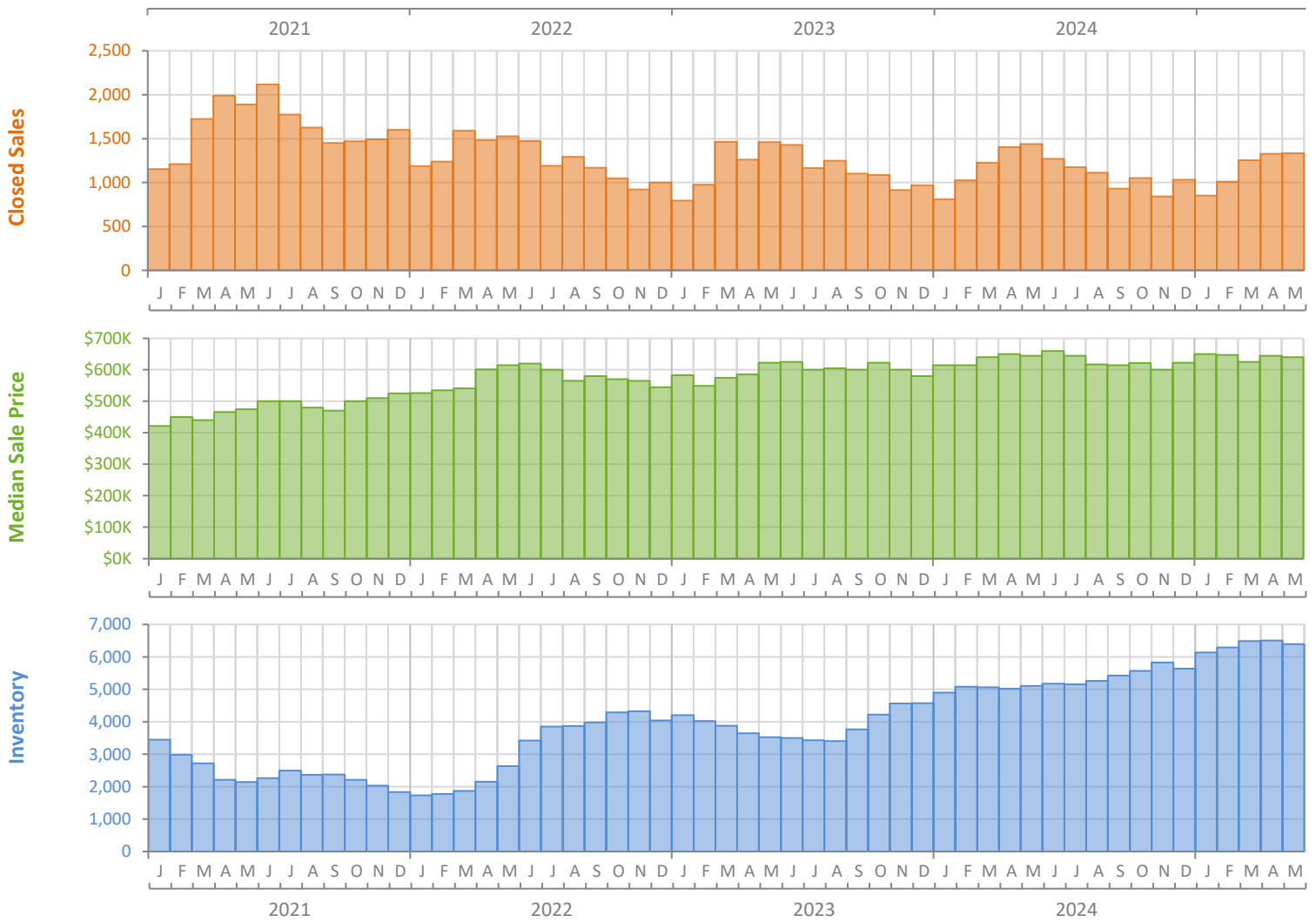
Monthly Market Summary - May 2025

Single-Family Homes

Palm Beach County



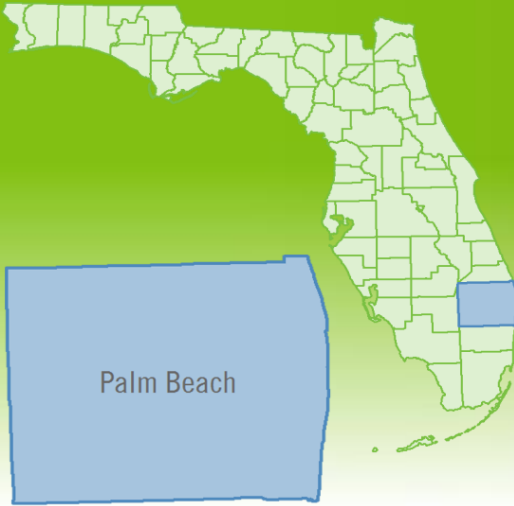
	May 2025	May 2024	Percent Change Year-over-Year
Closed Sales	1,334	1,439	-7.3%
Paid in Cash	572	662	-13.6%
Median Sale Price	\$640,000	\$645,000	-0.8%
Average Sale Price	\$1,391,447	\$1,267,931	9.7%
Dollar Volume	\$1.9 Billion	\$1.8 Billion	1.7%
Med. Pct. of Orig. List Price Received	93.2%	94.1%	-1.0%
Median Time to Contract	42 Days	39 Days	7.7%
Median Time to Sale	86 Days	84 Days	2.4%
New Pending Sales	1,278	1,313	-2.7%
New Listings	1,753	1,793	-2.2%
Pending Inventory	1,832	1,979	-7.4%
Inventory (Active Listings)	6,391	5,108	25.1%
Months Supply of Inventory	5.8	4.4	31.8%



Monthly Distressed Market - May 2025

Single-Family Homes

Palm Beach County



		May 2025	May 2024	Percent Change Year-over-Year
Traditional	Closed Sales	1,329	1,432	-7.2%
	Median Sale Price	\$640,000	\$649,500	-1.5%
Foreclosure/REO	Closed Sales	4	5	-20.0%
	Median Sale Price	\$425,000	\$240,000	77.1%
Short Sale	Closed Sales	1	2	-50.0%
	Median Sale Price	\$410,000	\$575,500	-28.8%

