

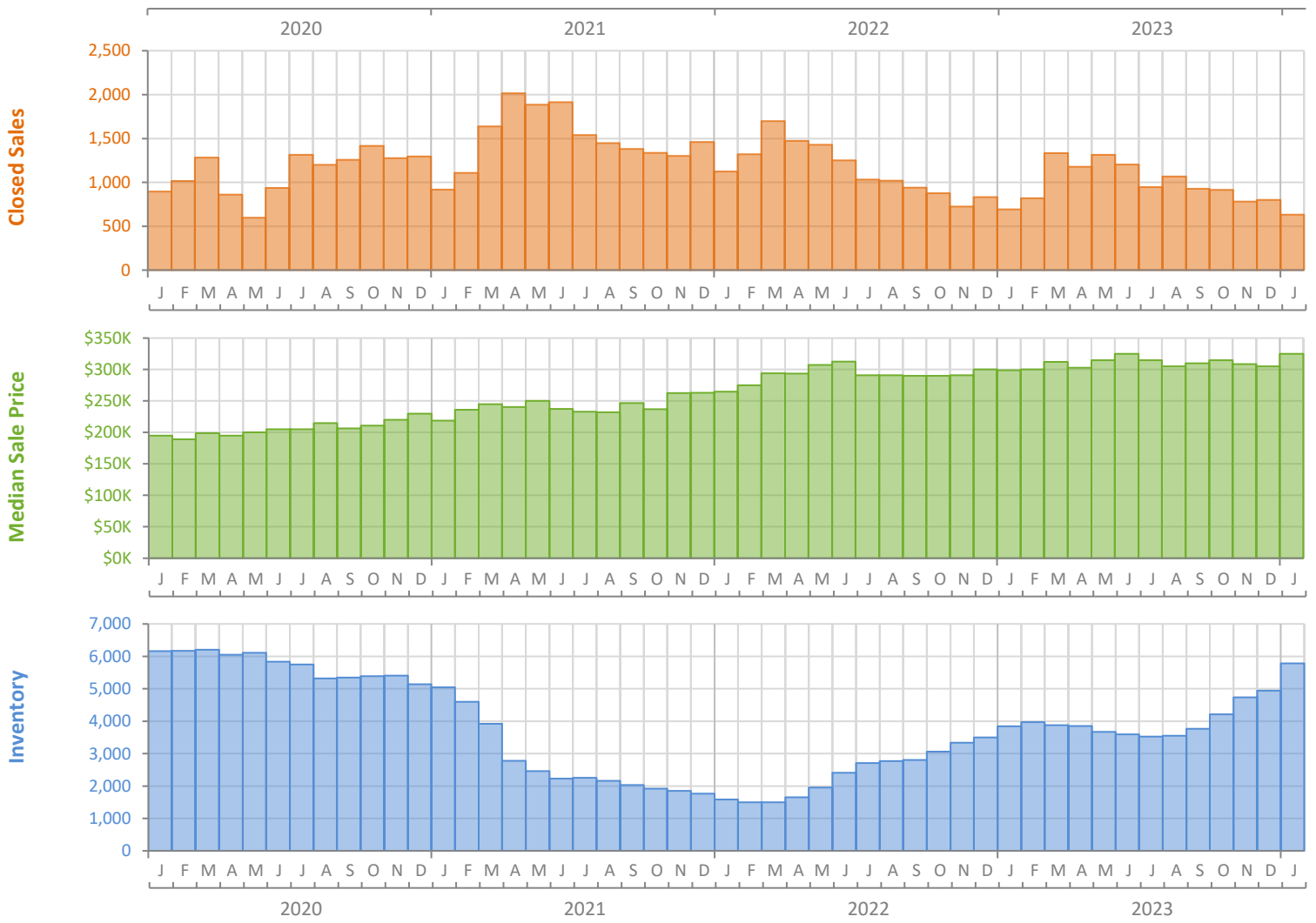
Monthly Market Summary - January 2024

Townhouses and Condos

Palm Beach County



| | January 2024 | January 2023 | Percent Change Year-over-Year |
|----------------------------------------|-----------------|-----------------|-------------------------------|
| Closed Sales | 633 | 694 | -8.8% |
| Paid in Cash | 405 | 441 | -8.2% |
| Median Sale Price | \$325,000 | \$299,000 | 8.7% |
| Average Sale Price | \$527,628 | \$467,129 | 13.0% |
| Dollar Volume | \$334.0 Million | \$324.2 Million | 3.0% |
| Med. Pct. of Orig. List Price Received | 94.3% | 94.3% | 0.0% |
| Median Time to Contract | 35 Days | 30 Days | 16.7% |
| Median Time to Sale | 78 Days | 73 Days | 6.8% |
| New Pending Sales | 932 | 1,175 | -20.7% |
| New Listings | 2,122 | 1,741 | 21.9% |
| Pending Inventory | 1,307 | 1,664 | -21.5% |
| Inventory (Active Listings) | 5,785 | 3,840 | 50.7% |
| Months Supply of Inventory | 5.8 | 3.5 | 65.7% |



Monthly Distressed Market - January 2024

Townhouses and Condos

Palm Beach County



| | | January 2024 | January 2023 | Percent Change Year-over-Year |
|-----------------|-------------------|--------------|--------------|-------------------------------|
| Traditional | Closed Sales | 630 | 691 | -8.8% |
| | Median Sale Price | \$325,000 | \$299,950 | 8.4% |
| Foreclosure/REO | Closed Sales | 2 | 3 | -33.3% |
| | Median Sale Price | \$187,500 | \$196,175 | -4.4% |
| Short Sale | Closed Sales | 1 | 0 | N/A |
| | Median Sale Price | \$330,000 | (No Sales) | N/A |

