

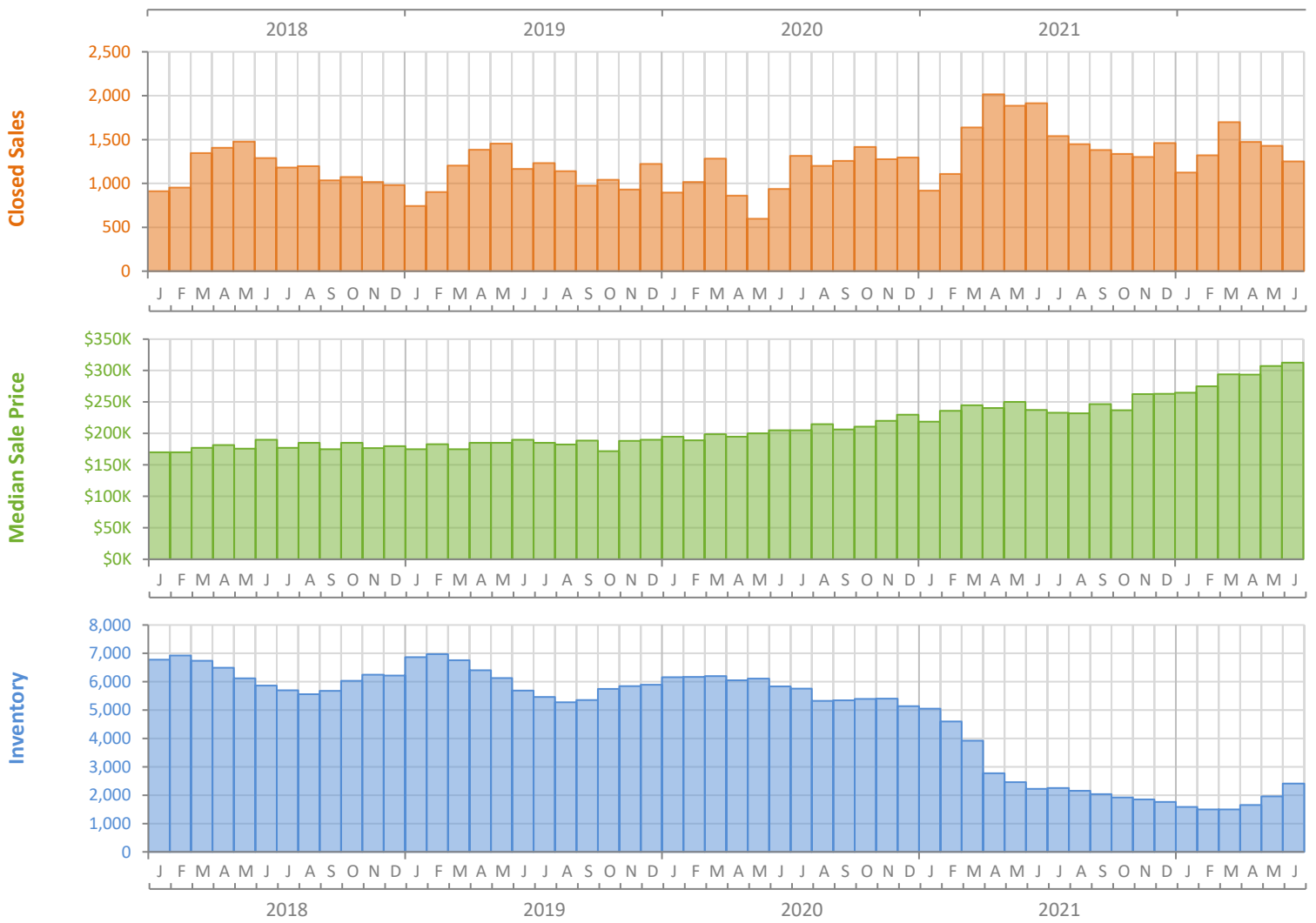
Monthly Market Summary - June 2022

Townhouses and Condos

Palm Beach County



| | June 2022 | June 2021 | Percent Change Year-over-Year |
|--|-----------------|-----------------|-------------------------------|
| Closed Sales | 1,252 | 1,913 | -34.6% |
| Paid in Cash | 791 | 1,188 | -33.4% |
| Median Sale Price | \$312,500 | \$237,500 | 31.6% |
| Average Sale Price | \$484,709 | \$409,595 | 18.3% |
| Dollar Volume | \$606.9 Million | \$783.6 Million | -22.6% |
| Med. Pct. of Orig. List Price Received | 100.0% | 97.6% | 2.5% |
| Median Time to Contract | 11 Days | 19 Days | -42.1% |
| Median Time to Sale | 51 Days | 64 Days | -20.3% |
| New Pending Sales | 1,152 | 1,672 | -31.1% |
| New Listings | 1,707 | 1,592 | 7.2% |
| Pending Inventory | 1,927 | 2,781 | -30.7% |
| Inventory (Active Listings) | 2,408 | 2,224 | 8.3% |
| Months Supply of Inventory | 1.7 | 1.5 | 13.3% |



Monthly Distressed Market - June 2022

Townhouses and Condos

Palm Beach County



| | | June 2022 | June 2021 | Percent Change Year-over-Year |
|-----------------|-------------------|------------|-----------|-------------------------------|
| Traditional | Closed Sales | 1,249 | 1,900 | -34.3% |
| | Median Sale Price | \$314,500 | \$238,000 | 32.1% |
| Foreclosure/REO | Closed Sales | 3 | 11 | -72.7% |
| | Median Sale Price | \$150,000 | \$124,000 | 21.0% |
| Short Sale | Closed Sales | 0 | 2 | -100.0% |
| | Median Sale Price | (No Sales) | \$104,950 | N/A |

