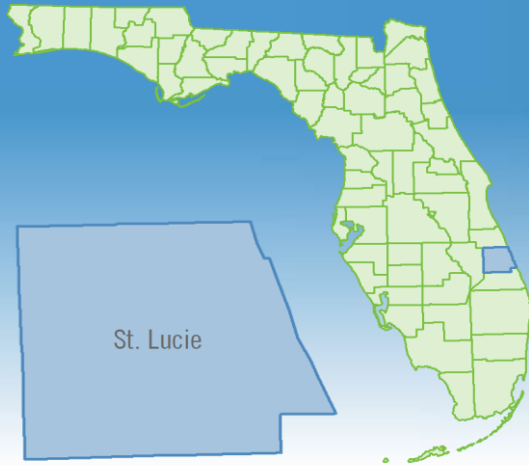


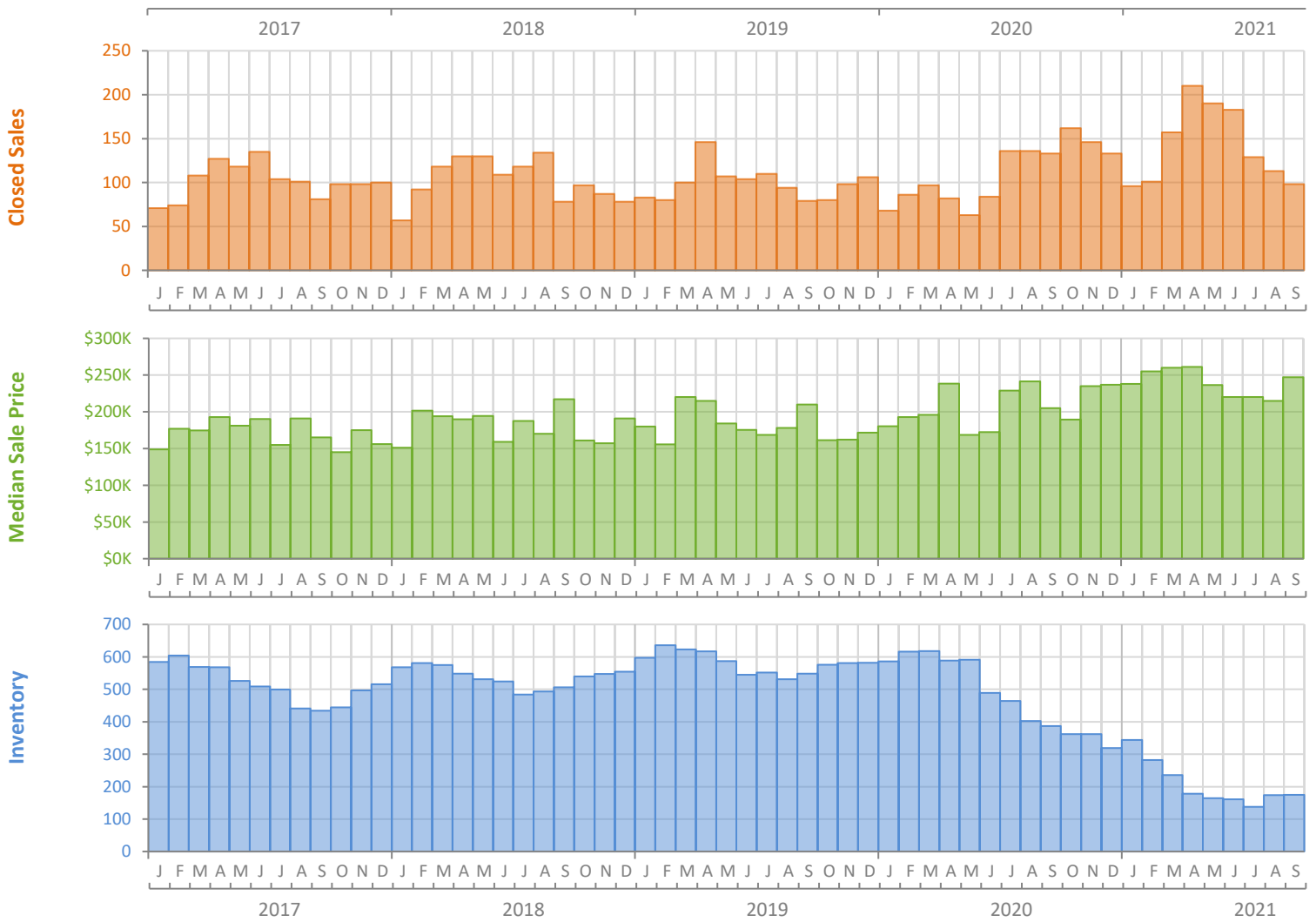
# Monthly Market Summary - September 2021

## Townhouses and Condos

### St. Lucie County



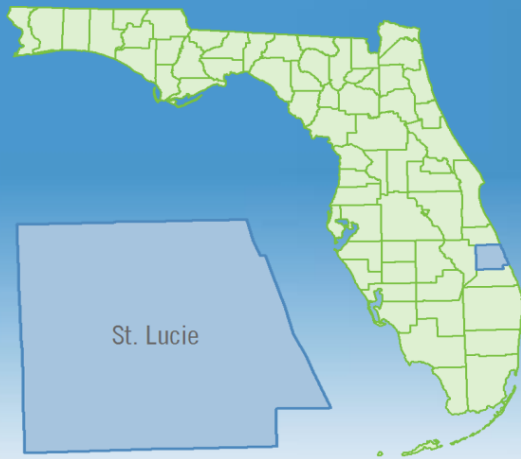
|  | September 2021 | September 2020 | Percent Change Year-over-Year |
|--|----------------|----------------|-------------------------------|
| Closed Sales                           | 98             | 133            | -26.3%                        |
| Paid in Cash                           | 52             | 59             | -11.9%                        |
| Median Sale Price                      | \$247,000      | \$205,000      | 20.5%                         |
| Average Sale Price                     | \$326,898      | \$264,608      | 23.5%                         |
| Dollar Volume                          | \$32.0 Million | \$35.2 Million | -9.0%                         |
| Med. Pct. of Orig. List Price Received | 98.5%          | 95.6%          | 3.0%                          |
| Median Time to Contract                | 9 Days         | 42 Days        | -78.6%                        |
| Median Time to Sale                    | 44 Days        | 86 Days        | -48.8%                        |
| New Pending Sales                      | 112            | 174            | -35.6%                        |
| New Listings                           | 120            | 167            | -28.1%                        |
| Pending Inventory                      | 162            | 222            | -27.0%                        |
| Inventory (Active Listings)            | 175            | 387            | -54.8%                        |
| Months Supply of Inventory             | 1.2            | 4.0            | -70.0%                        |



# Monthly Distressed Market - September 2021

## Townhouses and Condos

### St. Lucie County



|                 |                   | September 2021 | September 2020 | Percent Change Year-over-Year |
|-----------------|-------------------|----------------|----------------|-------------------------------|
| Traditional     | Closed Sales      | 98             | 133            | -26.3%                        |
|                 | Median Sale Price | \$247,000      | \$205,000      | 20.5%                         |
| Foreclosure/REO | Closed Sales      | 0              | 0              | N/A                           |
|                 | Median Sale Price | (No Sales)     | (No Sales)     | N/A                           |
| Short Sale      | Closed Sales      | 0              | 0              | N/A                           |
|                 | Median Sale Price | (No Sales)     | (No Sales)     | N/A                           |

