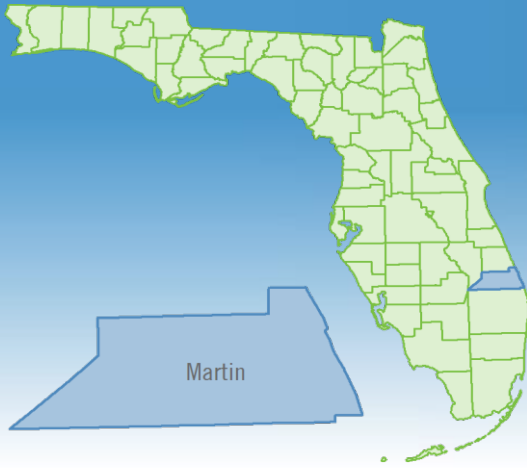


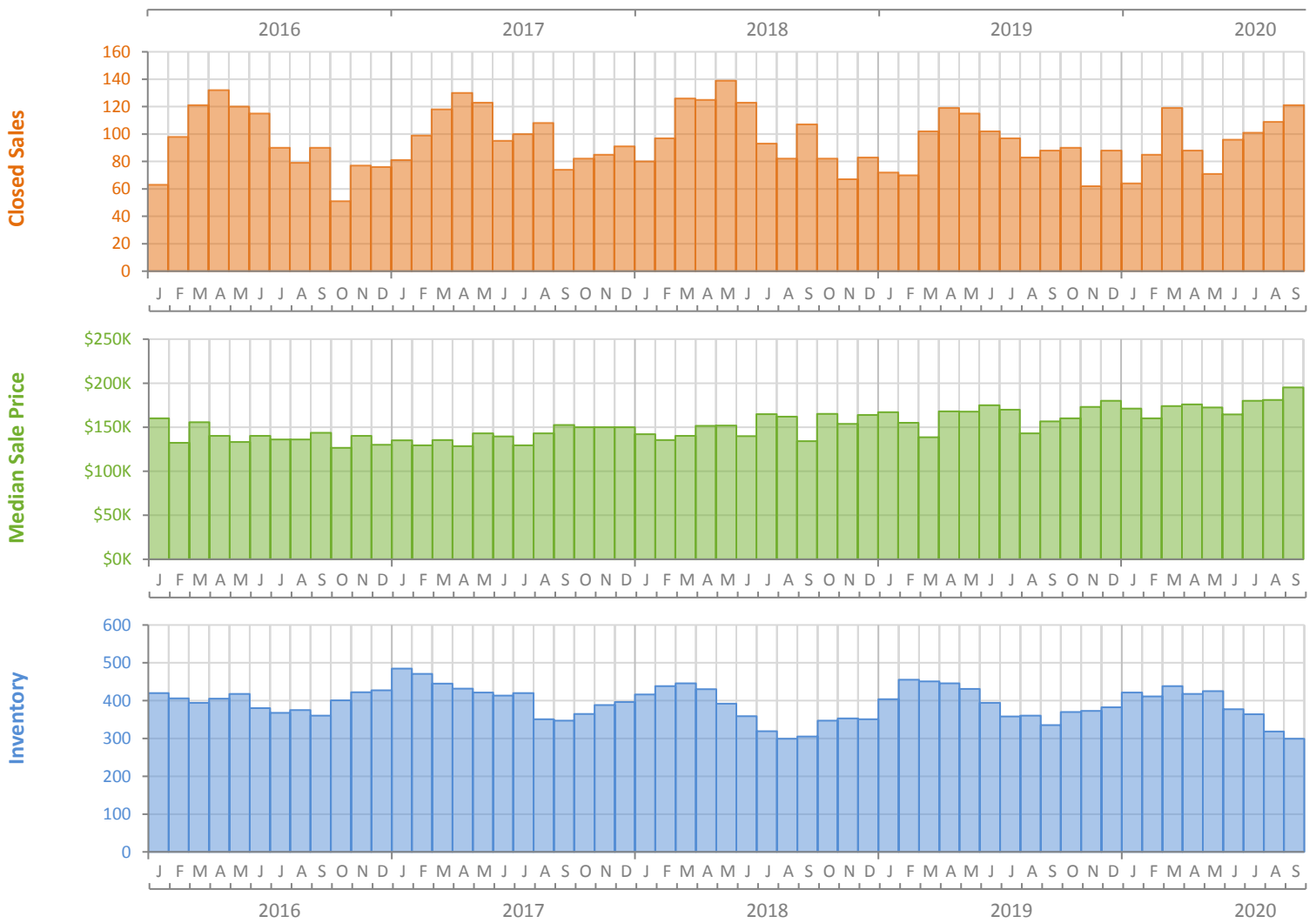
# Monthly Market Summary - September 2020

## Townhouses and Condos

### Martin County



|                                        | September 2020 | September 2019 | Percent Change Year-over-Year |
|----------------------------------------|----------------|----------------|-------------------------------|
| Closed Sales                           | 121            | 88             | 37.5%                         |
| Paid in Cash                           | 55             | 54             | 1.9%                          |
| Median Sale Price                      | \$195,000      | \$156,500      | 24.6%                         |
| Average Sale Price                     | \$230,661      | \$190,425      | 21.1%                         |
| Dollar Volume                          | \$27.9 Million | \$16.8 Million | 66.6%                         |
| Med. Pct. of Orig. List Price Received | 95.7%          | 94.8%          | 0.9%                          |
| Median Time to Contract                | 35 Days        | 57 Days        | -38.6%                        |
| Median Time to Sale                    | 74 Days        | 102 Days       | -27.5%                        |
| New Pending Sales                      | 135            | 74             | 82.4%                         |
| New Listings                           | 142            | 82             | 73.2%                         |
| Pending Inventory                      | 178            | 121            | 47.1%                         |
| Inventory (Active Listings)            | 299            | 335            | -10.7%                        |
| Months Supply of Inventory             | 3.3            | 3.7            | -10.8%                        |



# Monthly Distressed Market - September 2020

## Townhouses and Condos

### Martin County



|                 |                   | September 2020 | September 2019 | Percent Change Year-over-Year |
|-----------------|-------------------|----------------|----------------|-------------------------------|
| Traditional     | Closed Sales      | 119            | 85             | 40.0%                         |
|                 | Median Sale Price | \$195,000      | \$158,000      | 23.4%                         |
| Foreclosure/REO | Closed Sales      | 2              | 3              | -33.3%                        |
|                 | Median Sale Price | \$114,755      | \$127,000      | -9.6%                         |
| Short Sale      | Closed Sales      | 0              | 0              | N/A                           |
|                 | Median Sale Price | (No Sales)     | (No Sales)     | N/A                           |

