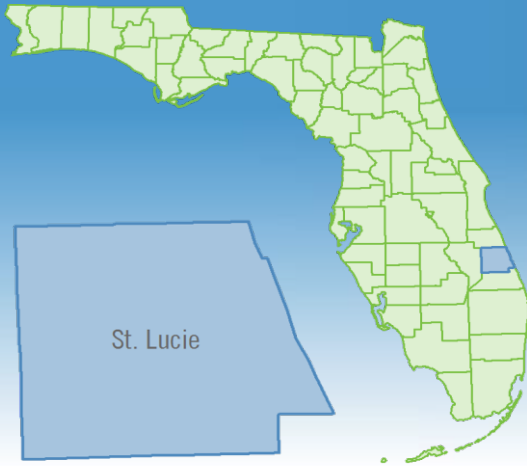


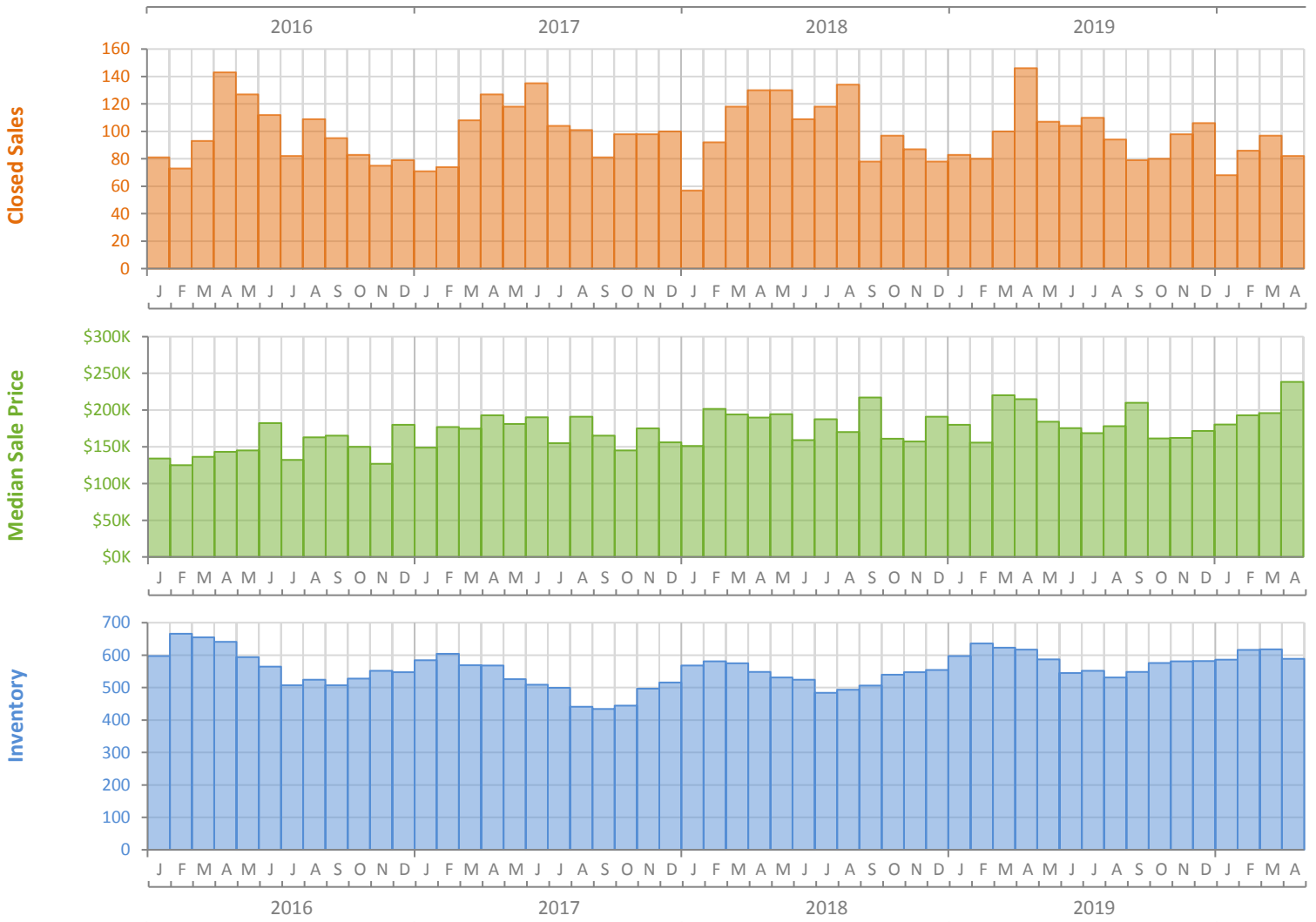
Monthly Market Summary - April 2020

Townhouses and Condos

St. Lucie County



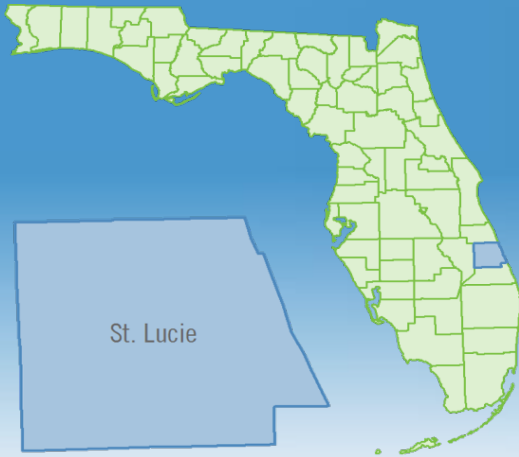
| | April 2020 | April 2019 | Percent Change Year-over-Year |
|--|----------------|----------------|-------------------------------|
| Closed Sales | 82 | 146 | -43.8% |
| Paid in Cash | 40 | 61 | -34.4% |
| Median Sale Price | \$238,500 | \$215,000 | 10.9% |
| Average Sale Price | \$268,341 | \$244,847 | 9.6% |
| Dollar Volume | \$22.0 Million | \$35.7 Million | -38.4% |
| Med. Pct. of Orig. List Price Received | 94.3% | 93.7% | 0.6% |
| Median Time to Contract | 53 Days | 80 Days | -33.8% |
| Median Time to Sale | 103 Days | 119 Days | -13.4% |
| New Pending Sales | 54 | 119 | -54.6% |
| New Listings | 86 | 149 | -42.3% |
| Pending Inventory | 96 | 142 | -32.4% |
| Inventory (Active Listings) | 589 | 617 | -4.5% |
| Months Supply of Inventory | 6.4 | 6.0 | 6.7% |



Monthly Distressed Market - April 2020

Townhouses and Condos

St. Lucie County



| | | April 2020 | April 2019 | Percent Change Year-over-Year |
|-----------------|-------------------|------------|------------|-------------------------------|
| Traditional | Closed Sales | 81 | 141 | -42.6% |
| | Median Sale Price | \$241,250 | \$215,950 | 11.7% |
| Foreclosure/REO | Closed Sales | 1 | 4 | -75.0% |
| | Median Sale Price | \$3,000 | \$96,375 | -96.9% |
| Short Sale | Closed Sales | 0 | 1 | -100.0% |
| | Median Sale Price | (No Sales) | \$250,000 | N/A |

