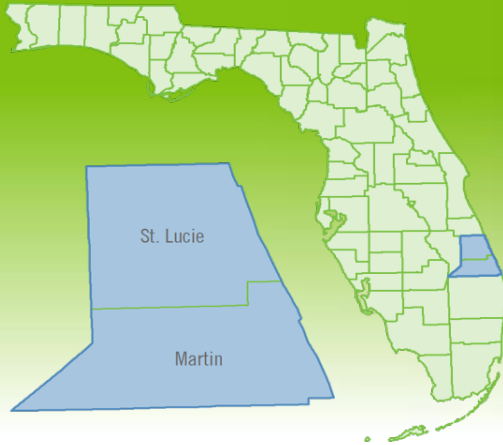


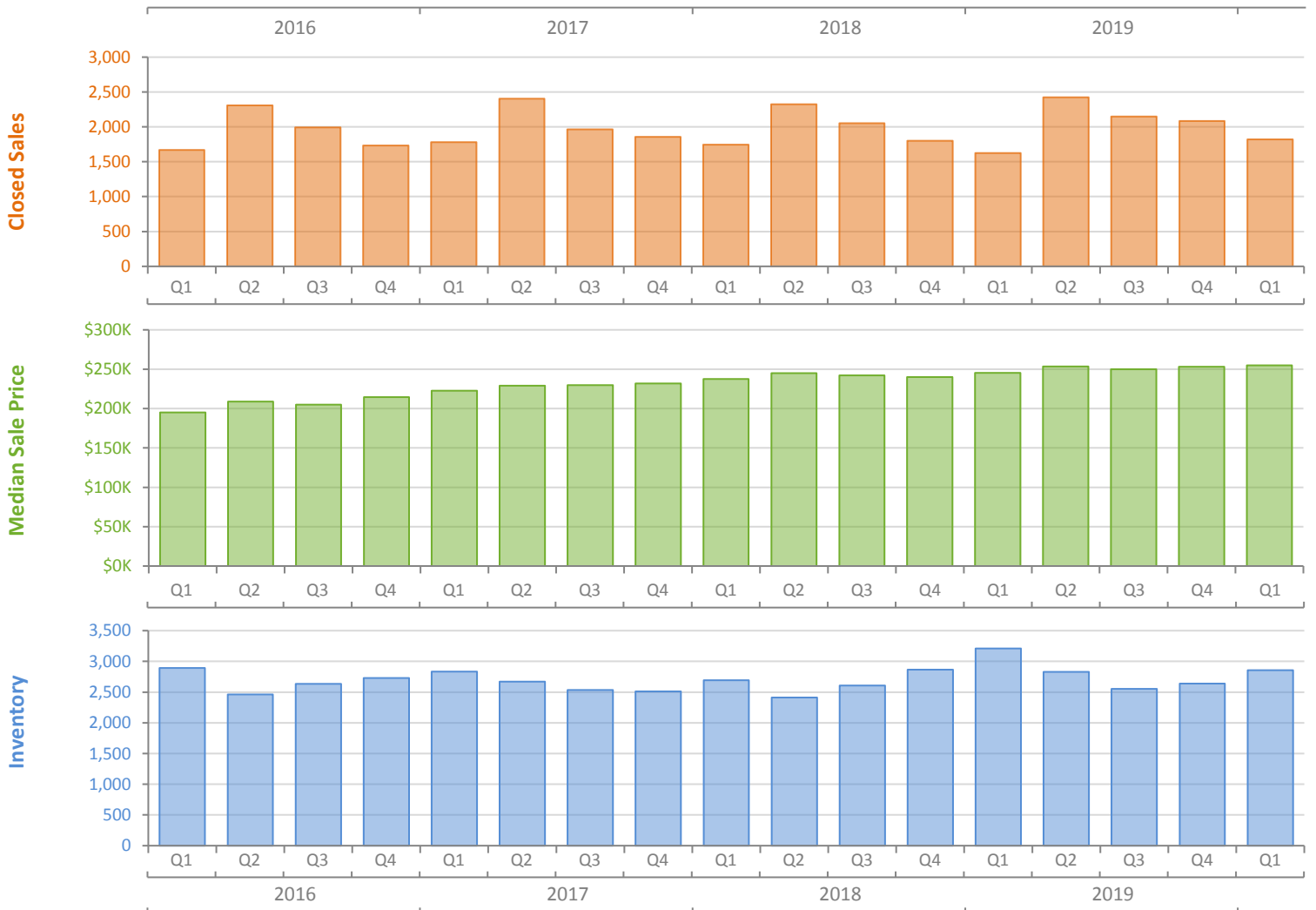
Quarterly Market Summary - Q1 2020

Single Family Homes

Port St. Lucie MSA



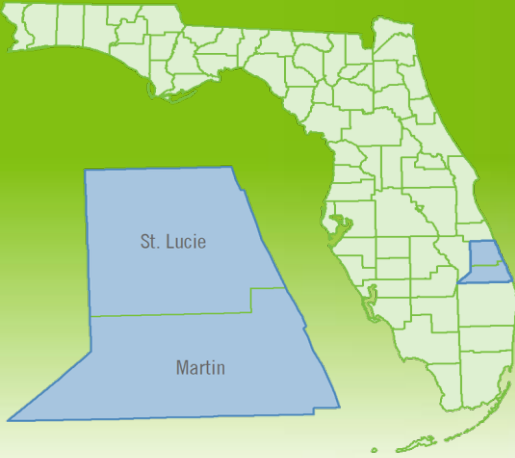
	Q1 2020	Q1 2019	Percent Change Year-over-Year
Closed Sales	1,821	1,627	11.9%
Paid in Cash	590	478	23.4%
Median Sale Price	\$255,000	\$245,325	3.9%
Average Sale Price	\$337,475	\$332,780	1.4%
Dollar Volume	\$614.5 Million	\$541.4 Million	13.5%
Med. Pct. of Orig. List Price Received	96.3%	95.4%	0.9%
Median Time to Contract	48 Days	58 Days	-17.2%
Median Time to Sale	91 Days	100 Days	-9.0%
New Pending Sales	2,502	2,281	9.7%
New Listings	3,089	3,111	-0.7%
Pending Inventory	1,321	1,300	1.6%
Inventory (Active Listings)	2,857	3,210	-11.0%
Months Supply of Inventory	4.0	4.9	-18.4%



Quarterly Distressed Market - Q1 2020

Single Family Homes

Port St. Lucie MSA



		Q1 2020	Q1 2019	Percent Change Year-over-Year
Traditional	Closed Sales	1,754	1,563	12.2%
	Median Sale Price	\$259,000	\$249,000	4.0%
Foreclosure/REO	Closed Sales	54	60	-10.0%
	Median Sale Price	\$189,175	\$179,750	5.2%
Short Sale	Closed Sales	13	4	225.0%
	Median Sale Price	\$209,000	\$184,500	13.3%

