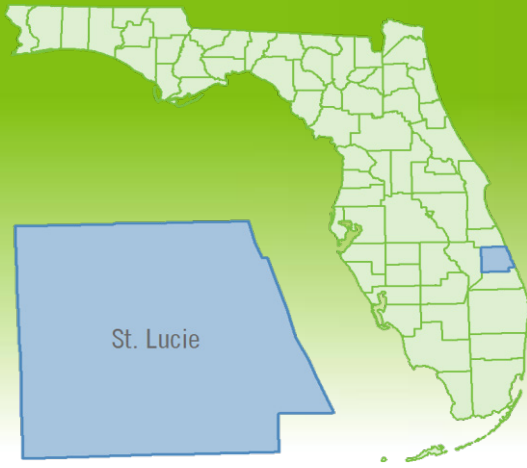


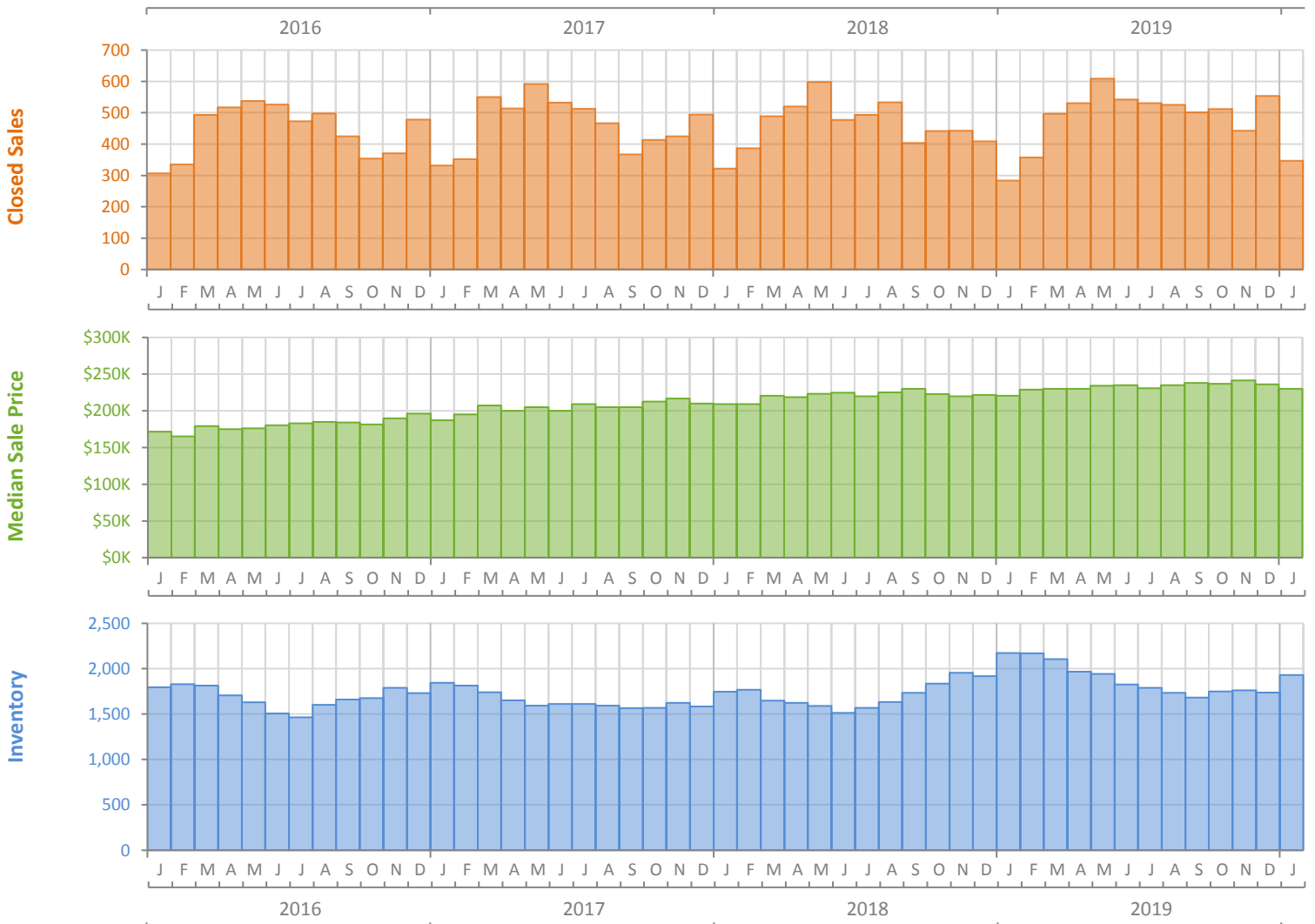
# Monthly Market Summary - January 2020

## Single Family Homes

### St. Lucie County



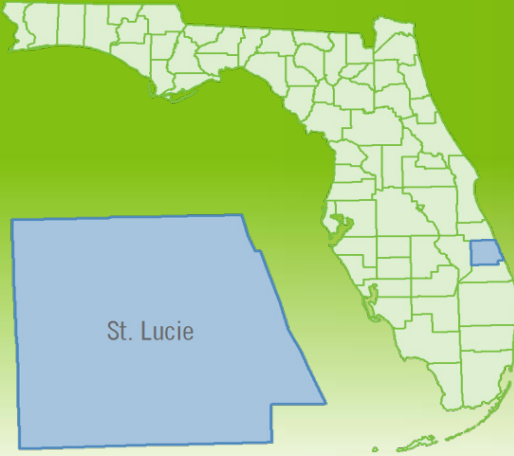
	January 2020	January 2019	Percent Change Year-over-Year
Closed Sales	347	284	22.2%
Paid in Cash	92	79	16.5%
Median Sale Price	\$230,000	\$220,644	4.2%
Average Sale Price	\$249,754	\$238,309	4.8%
Dollar Volume	\$86.7 Million	\$67.7 Million	28.1%
Med. Pct. of Orig. List Price Received	96.9%	95.8%	1.1%
Median Time to Contract	45 Days	54 Days	-16.7%
Median Time to Sale	85 Days	93 Days	-8.6%
New Pending Sales	584	472	23.7%
New Listings	832	785	6.0%
Pending Inventory	810	742	9.2%
Inventory (Active Listings)	1,929	2,174	-11.3%
Months Supply of Inventory	3.9	4.8	-18.8%



# Monthly Distressed Market - January 2020

## Single Family Homes

### St. Lucie County



		January 2020	January 2019	Percent Change Year-over-Year
Traditional	Closed Sales	323	269	20.1%
	Median Sale Price	\$235,000	\$225,000	4.4%
Foreclosure/REO	Closed Sales	22	14	57.1%
	Median Sale Price	\$184,025	\$152,750	20.5%
Short Sale	Closed Sales	2	1	100.0%
	Median Sale Price	\$226,750	\$180,000	26.0%

