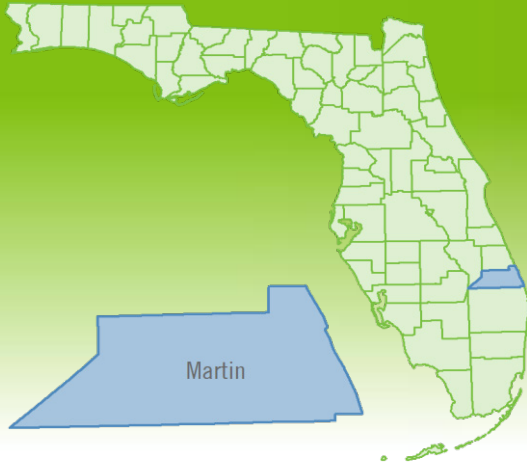


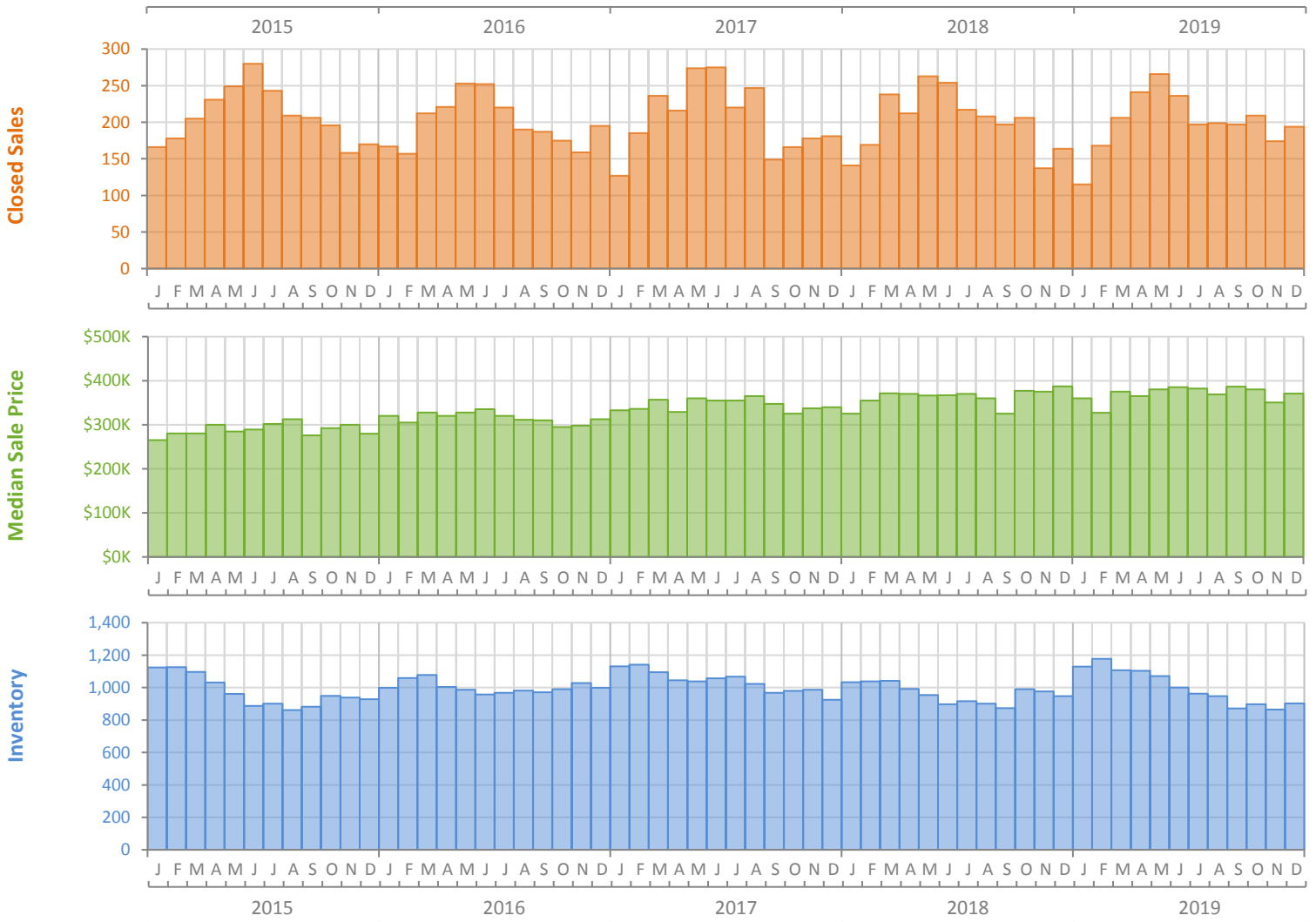
Monthly Market Summary - December 2019

Single Family Homes

Martin County



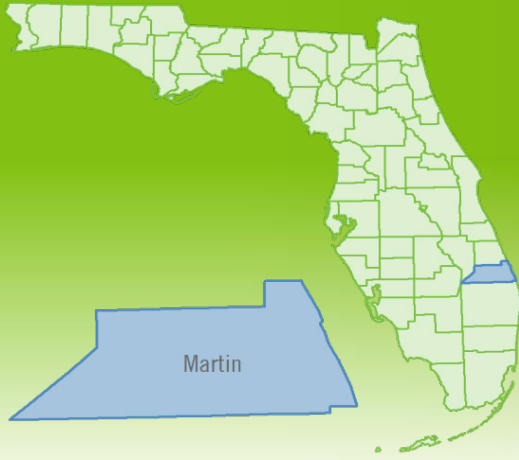
| | December 2019 | December 2018 | Percent Change Year-over-Year |
|--|----------------|----------------|-------------------------------|
| Closed Sales | 194 | 164 | 18.3% |
| Paid in Cash | 67 | 58 | 15.5% |
| Median Sale Price | \$370,500 | \$387,000 | -4.3% |
| Average Sale Price | \$501,134 | \$504,983 | -0.8% |
| Dollar Volume | \$97.2 Million | \$82.8 Million | 17.4% |
| Med. Pct. of Orig. List Price Received | 95.0% | 94.9% | 0.1% |
| Median Time to Contract | 41 Days | 43 Days | -4.7% |
| Median Time to Sale | 79 Days | 78 Days | 1.3% |
| New Pending Sales | 120 | 129 | -7.0% |
| New Listings | 197 | 164 | 20.1% |
| Pending Inventory | 218 | 201 | 8.5% |
| Inventory (Active Listings) | 902 | 947 | -4.8% |
| Months Supply of Inventory | 4.5 | 4.7 | -4.3% |



Monthly Distressed Market - December 2019

Single Family Homes

Martin County



| | | December 2019 | December 2018 | Percent Change Year-over-Year |
|-----------------|-------------------|---------------|---------------|-------------------------------|
| Traditional | Closed Sales | 191 | 159 | 20.1% |
| | Median Sale Price | \$371,000 | \$389,900 | -4.8% |
| Foreclosure/REO | Closed Sales | 2 | 5 | -60.0% |
| | Median Sale Price | \$207,500 | \$265,000 | -21.7% |
| Short Sale | Closed Sales | 1 | 0 | N/A |
| | Median Sale Price | \$575,000 | (No Sales) | N/A |

