

Why should I switch from using RETS to the RESO Web API?

While the RETS data transport has been a successful workhorse for the decade, it is no longer being updated and many MLSs are now requiring vendors to use the RESO Web API instead.

Some of the benefits of using Bridge API:

- Easier, more flexible data retrieval with a RESTful API that is more familiar to all software developers, rather than an industry specific technology.
- The ability to request data in real-time, without the need to replicate the entire dataset.
- Standardized API functionality and field names, meaning seamless integration between different MLSs. No more mapping hundreds of fields across multiple datasets!
- Robust documentation and an API Explorer that allows you to inspect your data, and build out queries without having to write a line of code.

Is the Bridge API RESO compliant?

Yes, we make listing data available with a Platinum Certified RESO Web API. Additionally, all data is normalized to the RESO Data Dictionary specification,

What data will I be able to retrieve using the Bridge API?

All listing data is available on the platform - IDX, VOW, etc. The MLS has full flexibility when granting you data access, and ultimately the scope of the data you have access to is up to them.

I would like to integrate with other MLSs in the region, is this supported?

Yes, the Bridge API can work with any MLS in the United States and Canada. Access to data is at the discretion of the individual MLSs, and may require additional data licenses.

What other data is available on the Bridge API platform?

Beyond MLS listing data, we also offer Public Records data (which includes transactions, assessments and parcel data for the entire US), as well as Zillow Zestimates, and more.

What does it cost to access MiamiRE data?

Bridge Interactive does not charge the vendor for data access to the MiamiRE dataset. Any data licensing fees are at the discretion of the MLS.

How often do you refresh the MLS listing data?

By default the data is refreshed every 10 minutes, depending on the MLS.

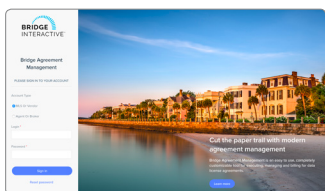
Am I able to replicate the dataset?

The Bridge API allows you to access data on-demand with very low latency. We also have tooling to allow you to easily replicate the entire dataset, however this functionality is at the discretion of the MLS.

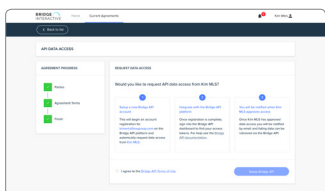
Introducing the Bridge API

Bridge Interactive has been dedicated to building technology for the Real Estate industry for over a decade. We are pleased to be working with the Miami Association of REALTORS to bring you a powerful, yet easy to use tool for accessing listing information: the Bridge API.

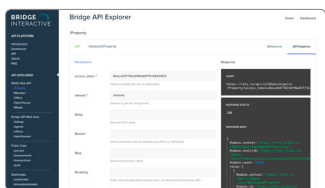
Getting started with the Bridge API



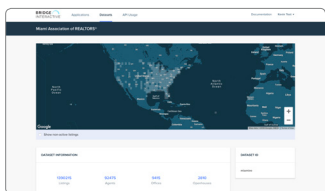
1. After requesting data access via the Bridge API from MiamiRE, you will be sent a link to create an account on the **Bridge Agreement Management** platform. Follow the prompts to execute the data license agreement setup by the MLS. You may be required to enter your payment details if necessary.



2. After completing the agreement you will be given the option of creating a **Bridge API** account. Follow the prompts to setup your account. This will also automatically register an application on the platform, and request API data access from MiamiRE.



3. You will be emailed a link to finalize your access to the **Bridge API** dashboard. Once complete you can immediately try integrating with our test datasets. Documentation and an API Explorer is available here: <https://bridgedataoutput.com/docs>.



4. When MiamiRE has approved your API data access, you will be notified by email. You will then be able to retrieve any data they have made available to you, using the **miamire** dataset code. If you have any questions about using the API, feel free to reach out at api@bridgeinteractive.com.

Learn more about us at BridgeInteractive.com

BRIDGE 
INTERACTIVE™